



Bureau Veritas CODDE

Training leaflet 2017



C O D D E

Trainings

► Environment: A better understanding for a perfect management	p. 3
► Life-Cycle Assessment:	
👉 Life-Cycle Assessment (LCA): principles and applications	p. 4
👉 Life-Cycle Assessment (LCA): E&E sector specificities	p. 5
👉 Life-Cycle Assessment (LCA): Textile sector specificities	p. 6
👉 Life-Cycle Assessment (LCA): Equipment and Building sector specificities	p. 7
► Circular economy: innovation to sustain leadership	p. 8
► Life-Cycle Costing (LCC): principles and applications	p. 9
► Water Footprint: principles and applications	p. 10
► Social Life-Cycle Assessment (SLCA): principles and applications	p. 11
► Ecodesign:	
👉 Ecodesign: principles and applications	p. 12
👉 Ecodesign: planning and management	p. 13
👉 Ecodesign: preparing for certification	p. 14
👉 Ecodesign: Application of ISO 14001 standard	p. 15
► Carbon:	
👉 Carbon: stakes, assessment and improvement	p. 16
👉 Carbon: application to biofuels	p. 17
► Environmental communication:	
👉 Environmental communication: principles and applications	p. 18
👉 Environmental communication: PEP ecopassport® format	p. 19
👉 Environmental communication: XP C08-100-1 and DHUP format	p. 20
👉 Environmental communication: EN 15804 and DHUP format	p. 21
👉 Environmental communication: EPD format	p. 22
👉 Environmental communication: French and European initiatives of environmental labelling	p. 23
► Ecodesign tools	
👉 EIME Designer	p. 24
👉 EIME Designer: to go further	p. 25
👉 EIME Database - Project & Database Manager	p. 26
👉 Hazardous substances platform	p. 27



CODDE

ENVIRONMENT : A BETTER UNDERSTANDING FOR A PERFECT MANAGEMENT

WHAT ARE THE METHODS AND THE TOOLS FOR A BETTER MANAGEMENT OF THE ENVIRONMENT BY COMPANIES?

OBJECTIVES:

- Learn and grasp environmental stakes, as well as circular and service economy methods
- Know the main tools and methods for the environmental assessment of a product or a service
- Discover the applications of the environmental assessment of a product or a service

AUDIENCE:

Manufacturers, designers, consultants, Quality and environment managers

LEVEL: Beginner

PRE-REQUISITE: None



PROGRAM

Context and stakes of the environmental assessment

Raising awareness on the environment

Presentation of main environmental indicators

Regulatory and normative stakes

Environmental assessment of products and services

Environmental assessment : risk, flow, monocriterion, multicriterion, monophasic, multiphase... approaches

Tools : checklists, MET matrix, SQLCA, water footprint, carbon and energy balances, LCA...

Applications of the environmental assessment

Environmental improvement: ecodesign, circular economy and service economy

Environmental communication: autodeclaration, ecolabels and ecoprofiles

Each item of the training will be illustrated with practical exercises as well as role-playing allowing the trainee to improve their knowledge: Q&A, workshop, examples for your specific activity, etc.

USEFUL INFORMATION

🕒 **DURATION:** 1 day (7 hours)

📍 **LOCATION:** Bureau Veritas CODDE's office or your office (Intra-training)

✉ **CONTACT :** codde@fr.bureauveritas.com

LIFE-CYCLE ASSESSMENT (LCA): PRINCIPLES AND APPLICATIONS

WHAT ARE THE STAKES AND PRINCIPLES LINKED TO LCA?

IN WHICH CONTEXT SHALL WE USE LCA?

OBJECTIVES:

- Learn and grasp environmental stakes
- Assess the environmental footprint of your products and services in compliance with ISO 14040:2006 and ISO 14044:2006 standards

AUDIENCE:

Consultants, product managers, business responsible, project manager, designer, quality and environment manager

LEVEL: Beginner

PRE-REQUISITE: None



PROGRAM

Understanding of environmental stakes

Raising awareness on the environment and its stakes

Normative and regulatory context related to Life-Cycle Assessment (LCA)

LCA applications

Means and tools for performing the evaluation

Assessing the environmental footprint of a product and a service

Definition of the objectives and the scope (functional unit, system boundaries, exclusions, etc)

Data collection and Life-Cycle Inventory

Interpretation of environmental impact results

Each item of the training will be illustrated with practical exercises as well as role-playing allowing the trainee to improve their knowledge: Q&A, workshop, examples for your specific activity, etc.

USEFUL INFORMATION

🕒 **DURATION:** 1 day (7 hours)

📍 **LOCATION:** Bureau Veritas CODDE's office or your office (Intra-training)

✉️ **CONTACT :** codde@fr.bureauveritas.com

LIFE-CYCLE ASSESSMENT (LCA): E&E SECTOR SPECIFICITIES

WHAT ARE THE MAIN STAKES RELATED TO THE LIFE-CYCLE ASSESSMENT OF ELECTRONIC AND ELECTRICAL EQUIPMENT?

OBJECTIVES:

- Understanding the environmental, normative and regulatory stakes related to the LCA of Electronic and Electrical Equipment
- Highlighting the methodological key points allowing an appropriate realization of LCA in this sector

AUDIENCE:

Consultants, product managers, business responsible, project manager, designer, quality and environment manager in E&E sector

LEVEL: Intermediate

PRE-REQUISITE:

Life-Cycle Assessment: principles and applications or equivalent knowledge/training



PROGRAM

E&E sector stakes and context

Regulatory overview

Normative references

Stakes and environmental indicators of interest

Realizing an LCA of an E&E product/service

Methodological specificities influencing the scope of the study

Inventory data: which data to collect?

Missing data: which hypotheses?

E&E specific LCA tools

Enhancing LCA results

Environmental labelling

Environmental declaration: EPD, PEP ecopassport®, etc

Ecodesign

Each item of the training will be illustrated with practical exercises as well as role-playing allowing the trainee improving their learning skills: Q&A, workshop, examples for E&E products.

USEFUL INFORMATION

🕒 **DURATION:** 0.5 day (3.5 hours)

📍 **LOCATION:** Bureau Veritas CODDE's office or your office (Intra-training)

✉️ **CONTACT:** codde@fr.bureauveritas.com

LIFE-CYCLE ASSESSMENT (LCA): TEXTILE SECTOR SPECIFICITIES

WHAT ARE THE MAIN STAKES RELATED TO THE LIFE-CYCLE ASSESSMENT OF TEXTILE PRODUCTS?

OBJECTIVES:

- Raising awareness on the complexity of the Textile sector and facilitate data collection
- Highlighting available tools for the LCA of Textile products and their applications

AUDIENCE:

Consultants, product managers, business managers, project managers, designers, quality and environment managers in Textile sector

LEVEL: Intermediate

PRE-REQUISITE:

Life-Cycle Assessment: principles and applications or equivalent knowledge/training



PROGRAM

Textile sector stakes and context

Textile sector issues

Stakes and environmental indicators of interest

A manufacturing chain full of materials and processes

Realizing an LCA of a Textile product/service

Definitions and scope

Inventory data: which data to collect?

Missing data: which hypotheses?

Textile specific LCA tools

Enhancing LCA results

Environmental labelling

Environmental declaration: EPD, EN15804, etc

Ecodesign

Each item of the training will be illustrated with practical exercises as well as role-playing allowing the trainees to improve their knowledge: Q&A, workshop, examples for Textile products.

USEFUL INFORMATION

🕒 **DURATION:** 0.5 day (3.5 hours)

📍 **LOCATION:** Bureau Veritas CODDE's office or your office (Intra-training)

✉️ **CONTACT:** codde@fr.bureauveritas.com



CODDE

LIFE-CYCLE ASSESSMENT (LCA): EQUIPMENT AND BUILDING SECTOR SPECIFICITIES

WHAT ARE THE MAIN STAKES RELATED TO THE LIFE-CYCLE ASSESSMENT OF BUILDING PRODUCTS?

Objectives:

- Raising awareness on the complexity of the Building sector and facilitate data collection
- Highlighting available tools for the LCA of Building products to be integrated in buildings and their applications

AUDIENCE:

Consultants, product managers, business responsible, project manager, designer, quality and environment manager in Building sector

LEVEL: Intermediate

PRE-REQUISITE:

Life-Cycle Assessment: principles and applications or equivalent knowledge/training



PROGRAM

Building sector stakes and context

Motivations and stakes in the Building sector

Regulatory overview

Normative references

Stakes and environmental indicators of interest

Realizing an LCA of a Building product/service

Definitions and scope

Inventory data: which data to collect?

Missing data: which hypotheses?

Building specific LCA tools

Enhancing LCA results

Environmental labelling

Environmental declaration: EPD, EN15804, etc

Ecodesign

Each item of the training will be illustrated with practical exercises as well as role-playing allowing the trainees to improve their knowledge: Q&A, workshop, examples for Building products.

USEFUL INFORMATION

🕒 **DURATION:** 0.5 day (3.5 hours)

📍 **LOCATION:** Bureau Veritas CODDE's office or your office (Intra-training)

✉️ **CONTACT:** codde@fr.bureauveritas.com

CIRCULAR ECONOMY: INNOVATION FOR SUSTAIN LEADERSHIP

HOW TO USE AND IMPLEMENT A CIRCULAR ECONOMY APPROACH WITHIN A COMPANY TO GENERATE A POSITIVE IMPACT?

OBJECTIVES:

- Learn and grasp the circular economy to give management a new dimension within the stakes of contemporary economy
- Know the methods and the tools to implement a circular economy approach within a company
- Get feedbacks from industrials through actual case studies

AUDIENCE:

Manufacturers, designers, consultants, Quality and environment managers

LEVEL: Beginner

PRE-REQUISITE: None



PROGRAM

Context and stakes of circular economy

Raising awareness on circular economy and industrial ecology

Definitions and presentation of the "Institut de l'Economie Circulaire"

Implementation of a circular economy strategy

Methods: ecodesign, service economy, recycling and reuse...

LCA as a tool

Identification of pros and cons for the implementation of a circular economy strategy

Applications of circular economy

Feedbacks from industrials on different sectors of activities

Examples of implementations of circular economy strategies

Each item of the training will be illustrated with practical exercises as well as role-playing allowing the trainee to improve their knowledge: Q&A, workshop, examples for your specific activity, etc.

USEFUL INFORMATION

🕒 **DURATION:** 1 day (7 hours)

📍 **LOCATION:** Bureau Veritas CODDE's office or your office (Intra-training)

✉ **CONTACT:** codde@fr.bureauveritas.com



CODDE

LIFE-CYCLE COSTING (LCC): PRINCIPLES AND APPLICATIONS

WHAT ARE THE MAIN STAKES RELATED TO THE ECONOMIC AND ENVIRONMENTAL FOOTPRINT OF PRODUCTS?

HOW SHALL WE CONSIDER THE ECONOMIC ASPECTS ON TOP THE ENVIRONMENTAL ONES IN A LIFE-CYCLE PERSPECTIVE?

OBJECTIVES:

- Raising awareness on the economic and environmental impacts of products
- Highlighting the main principles of Life-Cycle Inventory
- Being able to interpret the results of the evaluation and its limits

AUDIENCE:

Consultants, product managers, business managers, project managers, designer, quality and environment managers, CSR and sustainable development managers, buyers, marketing teams of all sectors

LEVEL: Beginner

PRE-REQUISITE: None



PROGRAM

Understanding the context of Life-Cycle Costing

Definitions

Normative context on Life-Cycle Costing

Applications of LCC

Means and tools

Assessing the cost of your product along its life-cycle

Assessment and price evolution

Cost assessment and ecodesign solutions

Interpretation and applications

Involve and train your project team

Each item of the training will be illustrated with practical exercises as well as role-playing allowing the trainees to improve their knowledge: Q&A, workshop, examples.

USEFUL INFORMATION

🕒 **DURATION:** 1 day (7 hours)

📍 **LOCATION:** Bureau Veritas CODDE's office or your office (Intra-training)

✉ **CONTACT:** codde@fr.bureauveritas.com



CODDE

WATER FOOTPRINT: PRINCIPLES AND APPLICATIONS

WHAT ARE THE MAIN STAKES AND PRINCIPLES RELATED TO WATER FOOTPRINT?

OBJECTIVES:

- Understanding the environmental stakes of the Water footprint
- Raising awareness on ISO 14046 normative context
- Implementing water footprint evaluation of your products and interpreting the results

AUDIENCE:

Consultants, product managers, business managers, project managers, designers, quality and environment managers

LEVEL: Beginner

PRE-REQUISITE: None



Beginner
Level



PROGRAM

Understanding water footprint stakes

Water: an unusual resource

Blue, green and grey waters: which definitions?

A complex understanding

Normative context - ISO 14046

Scope and limits of the standard

Definition and general principles

Methodological framework

Assessment of the water footprint of your products and services

Definition of the perimeter of the study

Managing your data collection

Choosing the appropriate evaluation method

Interpreting and valuing the results of the evaluation

Each item of the training will be illustrated with practical exercises as well as role-playing allowing the trainees to improve their knowledge: Q&A, workshop, examples.

USEFUL INFORMATION

🕒 **DURATION:** 1 day (7 hours)

📍 **LOCATION:** Bureau Veritas CODDE's office or your office (Intra-training)

✉ **CONTACT:** codde@fr.bureauveritas.com



CODDE

SOCIAL LIFE-CYCLE ASSESSMENT (SLCA): PRINCIPLES AND APPLICATIONS

WHAT ARE THE MAIN STAKES AND PRINCIPLES RELATED TO SOCIAL LIFE-CYCLE ASSESSMENT (SLCA)?

HOW SHALL WE CONSIDER THE SOCIAL ASPECTS ON TOP OF THE ENVIRONMENTAL ONES IN A LIFE-CYCLE PERSPECTIVE?

OBJECTIVES:

- Raising awareness on the link between environmental and social aspects of products
- Defining the main principles and methods of Social Life Cycle Assessment (SLCA)
- Being able to interpret the results and to determine the limits of the evaluation

AUDIENCE:

Consultants, product managers, business managers, project managers, designers, quality and environment managers, CSR and sustainable development managers, human resource managers, marketing teams

LEVEL: Beginner

PRE-REQUISITE: None



Beginner
Level



PROGRAM

Understanding social aspects

Social dimension of sustainable development

Company motivations

SLCA definition

UNEP-reference presentation

Assessing the social dimension of your product along its life-cycle

SLCA steps

Presentation of the SLCA toolbox

Interpretation of social impact results

Involve and train your project team

Each item of the training will be illustrated with practical exercises as well as role-playing allowing the trainee improving their learning skills: Q&A, workshop, examples.

USEFUL INFORMATION

🕒 **DURATION:** 1 day (7 hours)

📍 **LOCATION:** Bureau Veritas CODDE's office or your office (Intra-training)

✉ **CONTACT:** codde@fr.bureauveritas.com



CODDE

ECODESIGN: PRINCIPLES AND APPLICATIONS

WHAT ARE THE METHODS AND TOOLS IN USE FOR IMPLEMENTING AN ECODESIGN APPROACH?

WHAT ARE THE WORK AXES OF SUCH APPROACH?

OBJECTIVES:

- Discovering the main principles of Ecodesign
- Understanding the stakes of the implementation of the eco design approach in terms of regulatory constraints, client expectations and competitive benefits
- Dealing with the main steps for implementing and enhancing an eco design approach

AUDIENCE:

Consultants, product managers, business managers, project managers, designers, quality and environment managers, CSR and sustainable development managers, human resource managers, marketing teams

LEVEL: Beginner

PRE-REQUISITE: None



PROGRAM

Introduction to eco design

Introduction and definition

Environmental, regulatory, strategic and competitive stakes

Main principles of eco design

UNEP-reference presentation

Implementation of the approach

Normative framework

Motivations and limits

Quantitative eco design: tools and applications

Qualitative eco design: tools and applications

Enhancing the approach

Environmental communication

Certification formats

Integration in the Environmental Management System

Each item of the training will be illustrated with practical exercises as well as role-playing allowing the trainee to improve their knowledge: Q&A, workshop, examples.

It is highly recommended to get an intra-training and to gather as many key stakeholders as possible in the eco design process.

USEFUL INFORMATION

🕒 **DURATION:** 1 day (7 hours)

📍 **LOCATION:** Bureau Veritas CODDE's office or your office (Intra-training)

✉ **CONTACT:** codde@fr.bureauveritas.com

**CODDE**

ECODESIGN: PLANNING AND MANAGEMENT

HOW SHALL WE IMPLEMENT AN ECODESIGN APPROACH ADAPTED TO YOUR PRODUCTS?

HOW SHALL YOU INVOLVE THE KEY ACTORS OF DESIGN AND DEVELOPMENT?

OBJECTIVES:

- Getting the key for efficiently organizing the implementation of ecodesign
- Understanding the phases and tools allowing the planning and management of ecodesign projects
- Identifying priority axes of ecodesign to define targets and objectives related to your activity

AUDIENCE:

Consultants, product managers, business managers, project managers, designers, quality and environment managers, CSR and sustainable development managers

LEVEL: Intermediate

PRE-REQUISITE:

Ecodesign: principles and applications or equivalent knowledge/training



PROGRAM

Planning your ecodesign approach

Plan Do Check Act (PDCA) wheel

Identifying your ecodesign strategy

Ecodesign actors: organisation, roles and responsibilities

Managing your ecodesign approach

Monitoring and management tools

Specific tools for the different actors

Motivations and limits

Manage the training and the skills

Internal communication with stakeholders

Practical exercises

Priority ecodesign axes

Monitoring and management tools: comparison with EIME alternatives

Upon-demand exercises (intra-training)

Each item of the training will be illustrated with practical exercises as well as role-playing allowing the trainee to improve their knowledge: Q&A, identification of significant environmental aspects, improvement axes, choice of appropriate environmental indicators to take into account.

It is highly recommended to get an intra-training and to gather as many key stakeholders as possible in the ecodesign process and to adapt it to your product specifically.

USEFUL INFORMATION

🕒 **DURATION:** 1 day (7 hours)

📍 **LOCATION:** Bureau Veritas CODDE's office or your office (Intra-training)

✉️ **CONTACT:** codde@fr.bureauveritas.com



CODDE

ECODESIGN: PREPARING FOR CERTIFICATION

IN WHICH CONTEXT CAN ECODESIGN BE VALUED THANKS TO A CERTIFICATION SCHEME?
HOW CAN YOU PREPARE FOR BUREAU VERITAS FOOTPRINT PROGRESS®
CERTIFICATION?

Objectives:

- Differentiating the different certification schemes and ecodesign communication channels
- Understanding Bureau Veritas Footprint Progress® certification process step by step
- Identifying key points of the reference and potential gaps to address for entering the certification process

Audience:

Consultants, product managers, project managers, designers, quality and environment managers, CSR and sustainable development managers

Level: Advanced

Pre-requisite:

Ecodesign: planning and management or equivalent knowledge/training



PROGRAM

Overview of the certification scheme

The different communication channels

Specificities related to the certification scheme

Bureau Veritas Footprint Progress Certification® key advantages

Requirements of the process step by step

Preliminary study: regulatory conformity and documentation

Step 1: Commitment to ecodesign

Step 2: Verification of ecodesign

Gap analysis and implementation of corrective actions

Preparation for the audit: determination of responsibilities and conformity proofs

Gap analysis: audit criteria

Audit key-points: documentation and interviews

Each item of the training will be illustrated with practical exercises as well as role-playing allowing the trainee to improve their knowledge: Q&A, workshops, application for your product (Intra-training).

USEFUL INFORMATION

🕒 **DURATION:** 1 day (7 hours)

📍 **LOCATION:** Bureau Veritas CODDE's office or your office (Intra-training)

✉️ **CONTACT:** codde@fr.bureauveritas.com



CODDE

ECODESIGN: APPLICATION OF ISO 14001 STANDARD

HOW SHALL YOU INTEGRATE ECODESIGN TO YOUR ENVIRONMENTAL MANAGEMENT SYSTEM?

HOW CAN YOU VALUE YOUR ECODESIGN APPROACH WITH ISO 14001 CERTIFICATION INCLUDING THE PRODUCT PERIMETER?

OBJECTIVES:

- Understanding how the ecodesign of a product can be generalized to an ecodesign activity
- Understanding the requirements of ISO 14001:2015 standard through the key-points of a product-based Environmental Management System (EMS)
- Identifying the key-points and tools allowing the integration of ecodesign to the EMS

AUDIENCE:

Quality and environment managers, method managers, ecodesign managers, CSR and sustainable development managers

LEVEL: Advanced

PRE-REQUISITE:

Ecodesign: planning and management or equivalent knowledge/training



PROGRAM

PLAN

Regulatory watch and other duties: a hotspot of a product-based EMS for the integration of the product perimeter as in ISO 14001

Identification and prioritization of environmental aspects of products: identification of SEA

Definition of horizontal and vertical objectives, targets and programs

Ecodesign policy: link with SEA, duties and objectives

Stake of documentation and tools: preparing for process, documentation and tools

DO

Roles and responsibilities of actors: training and commitment

Active tools: ensuring the good use of the tools by actors

Internal and external communication: choosing a communication strategy

Stakes of EMS management: follow and manage the design and the development of products in the product EMS scope

Stakes of documentation: knowing when adapting the procedures to practices and when making the opposite

CHECK, ACT

Monitoring and measurement: management of the ecodesign activity

Internal audits and certification: preparation

Corrective and preventive actions: gap analysis between ideal and practical cases

Management Review: showing the commitment of the Board

Each item of the training will be illustrated with practical exercises as well as role-playing allowing the trainee improving their learning to improve their knowledge: Q&A, workshops, application for your product (Intra-training).

USEFUL INFORMATION

🕒 **DURATION:** 1 day (7 hours)

📍 **LOCATION:** Bureau Veritas CODDE's office or your office (Intra-training)

✉ **CONTACT:** codde@fr.bureauveritas.com



CODDE

CARBON: STAKES, ASSESSMENT AND IMPROVEMENT

WHAT ARE THE STAKES RELATED TO THE CARBON EVALUATION OF YOUR PRODUCT AND COMPANY?

IN WHICH CONTEXT SHALL YOU CARRY OUT A CARBON EVALUATION?

OBJECTIVES:

- Understanding the environmental stakes related to the emission of Greenhouse gases and global warming
- Understanding the stakes for your company regarding the declaration of greenhouse gas emissions
- Being able to integrate a greenhouse gas emission reduction strategy for your company
- Being able to declare greenhouse gas emissions at company level

AUDIENCE:

Manufacturers, designers, consultants, Quality and environment managers, method managers, CSR and sustainable development managers

LEVEL: Beginner

PRE-REQUISITE: None



PROGRAM

Understanding the stakes regarding the evaluation of greenhouse gases

Global warming stakes

Normative and regulatory context regarding the emissions of greenhouse gases

Means and tools for the assessment of the carbon footprint of products: Bilan CO₂, GHG Protocol, Bilan Carbone®

Assessment of the carbon footprint

Definition of objectives, functional unit and system boundaries

Data collection and life-cycle inventories

Assessment of environmental impacts

Interpretation of environmental impact results

Greenhouse gas emission reduction strategy at company level

Declaration processing

Answer to current requirements and anticipation to future ones

Carbon offsetting and implementation of a greenhouse gas emission reduction plan at company level

Follow-up and valorisation of the approach

Each item of the training will be illustrated with practical exercises as well as role-playing allowing the trainees to improve their knowledge: Q&A, workshops, application for your product (Intra-training).

USEFUL INFORMATION

🕒 **DURATION:** 1,5 day (10,5 hours)

📍 **LOCATION:** Bureau Veritas CODDE's office or your office (Intra-training)

✉ **CONTACT:** codde@fr.bureauveritas.com



CODDE

CARBON: APPLICATION TO BIOFUELS

HOW CALCULATING THE BIOFUEL GREENHOUSE GAS EMISSIONS IN COMPLIANCE WITH 2009/28/EC DIRECTIVE?

PREPARATION TO THE 2BSVS SCHEME CERTIFICATION

OBJECTIVES:

- Preparing for 2BSvs scheme certification
- Understanding the requirements of the 2015/1513 directive requirements and 2BSvs methodology
- Being able to realize a GHG calculation
- Mastering GHG calculation tool

AUDIENCE:

Auditors and economic operators (transformers, storekeepers...)

LEVEL: Beginner

PRE-REQUISITE: None



PROGRAM

Understanding the environmental stakes of the sector

Environmental context of biofuels

Presentation of 2BSvs methodology and requirements of the 2015/1513 directive requirements

Assessment of the environmental foot

Presentation of 2BSvs tool and practical exercises

Methodological hotspots for the agriculture part (STD01): land use change, N2O emissions

Methodological hotspots for the transformation part (STD02): combined heat and power plant

Traceability and consistency of data

Value transmission

Data collection guide

Each item of the training will be illustrated with practical exercises as well as role-playing allowing the trainees to improve their knowledge: Q&A, practical exercise on tools, examples of calculation.

USEFUL INFORMATION

🕒 **DURATION:** 1 day (7 hours) Operators - 2 days (14 hours) Auditors

📍 **LOCATION:** Bureau Veritas CODDE's office or your office (Intra-training)

✉️ **CONTACT:** codde@fr.bureauveritas.com



CODDE

ENVIRONMENTAL COMMUNICATION: PRINCIPLES AND APPLICATIONS

HOW SHALL YOU COMMUNICATE TO VALUE THE ENVIRONMENTAL PERFORMANCE OF YOUR PRODUCTS?

OBJECTIVES:

- Learning the different formats of environmental communication
- Choosing the communication format you need
- Knowing how to value the environmental performance and ecodesign of your products through communication

AUDIENCE:

Product managers, business managers, project managers, designers, quality and environment managers, marketing and communication managers of all sectors

LEVEL: Beginner

PRE-REQUISITE: None



Beginner
Level



PROGRAM

Understanding the different environmental communication formats

Normative and regulatory overview of environmental declarations

Strengths and weaknesses of Ecolabels (ISO 14024)

Strengths and weaknesses of Self-declarations (ISO 14021)

Strengths and weaknesses of Ecoprofiles (ISO 14025)

Strengths and weaknesses of other formats: declaration programs, environmental labelling, European PEF (Product Environmental Footprint) project

Communicating in an appropriate way

Means of communication to implement internally and externally

Environmental allegation and green washing: when communication can jeopardize the company's interests

Eco-communication: adapting both the style and content

Each item of the training will be illustrated with practical exercises as well as role-playing allowing the trainees to improve their knowledge: Q&A, workshop, examples for your specific activity, synthetic exercises on strengths and weaknesses of each mode of communication, etc.

USEFUL INFORMATION

🕒 **DURATION:** 1 day (7 hours)

📍 **LOCATION:** Bureau Veritas CODDE's office or your office (Intra-training)

✉ **CONTACT:** codde@fr.bureauveritas.com

ENVIRONMENTAL COMMUNICATION: PEP ECOPASSPORT® FORMAT

HOW TO CONDUCT AN ENVIRONMENTAL PRODUCT DECLARATION (EPD) OF ELECTRONICS AND ELECTRICAL AND CLIMATIC ENGINEERING EQUIPMENT IN PEP ECOPASSPORT® FORMAT EDITION 3?

OBJECTIVES:

- Being able to answer the demands from your customers: payer, call for tenders, etc
- Knowing the requirements and the structure of PEP ecopassport® program edition 3
- Being able to write a type III (ecoprofile) environmental declaration in PEP ecopassport® format

AUDIENCE:

Product managers, business managers, project managers, designers, quality and environment managers, marketing and communication managers of E&E and climatic engineering sector

LEVEL: Intermediate

PRE-REQUISITE:

Environmental communication: principles and applications or equivalent knowledge/training



PROGRAM

Understanding the PEP ecopassport® program

Introduction to PEP ecopassport® program

Introduction to normative requirements linked to the PEP ecopassport® program

Structure of the program: PCR edition 3 and PSRs, identification of methodological rules

Conducting your declaration in PEP ecopassport® format

LCA of your product in compliance with the methodological requirements of the program

Content of the study report
Content of the environmental declaration

Verification by empowered verifier: processing and deliverables

Registration to the PEP ecopassport® database

Specific cases of declarations: rules to follow

Collective declarations

Family range declarations

What about systems?

Each item of the training will be illustrated with practical exercises as well as role-playing allowing the trainees to improve their knowledge: Q&A, workshop, examples for your specific activity, reflexion on PCRs and PSRs, the notion of product, function and systems.

USEFUL INFORMATION

🕒 **DURATION:** 1 day (7 hours)

📍 **LOCATION:** Bureau Veritas CODDE's office or your office (Intra-training)

✉️ **CONTACT:** codde@fr.bureauveritas.com



CODDE

ENVIRONMENTAL COMMUNICATION: XP C08-100-1 FORMAT

HOW TO CONDUCT AN ENVIRONMENTAL PRODUCT DECLARATION (EPD) IN COMPLIANCE WITH THE REQUIREMENTS OF DHUP DECREE ON ENVIRONMENTAL DECLARATIONS IN THE BUILDING SECTOR, AND THE EXPERIMENTAL XP C08-100-1 STANDARD?

OBJECTIVES:

- Being able to answer the demands from your customers: payer, call for tenders, etc
- Knowing the regulatory requirements of DHUP decree and orders on the environmental declarations of E&E and climatic engineering equipment to be integrated into buildings
- Being able to write a type III (ecoprofile) environmental declaration in both regulatory DHUP and normative XP C08-100-1 format.

AUDIENCE:

Product managers, business managers, project managers, designers, quality and environment managers, marketing and communication managers

LEVEL: Intermediate

PRE-REQUISITE:

Environmental communication & Life-Cycle Assessment: principles and applications or equivalent knowledge/training



Intermediate Level



PROGRAM

Understanding the link between the environmental quality of buildings and environmental declarations

Regulatory and normative context for the environmental assessment of building products and equipment

Introduction to the normative requirements of the experimental XP C08-100-1

Introduction to the regulatory requirements of DHUP decree and orders on environmental declarations of E&E and climatic engineering equipment to be integrated into buildings

Compliance agenda

Conducting your declaration in XP C08-100-1 format

LCA of your product in compliance with the methodological requirements of the experimental XP C08-100-1 standard

Content of the study report and the environmental declaration

Verification by empowered verifier: processing and deliverables

Registration to the regulatory database

Specific cases of declarations: rules to follow

Update of existing declarations

Focus on flow indicators (energy and waste) and modularity principle

Collective declarations

Family range declarations

What about systems?

Each item of the training will be illustrated with practical exercises as well as role-playing allowing the trainees to improve their knowledge: Q&A, workshop, examples for your specific activity, practical cases in EIME (LCA software).

USEFUL INFORMATION

🕒 **DURATION:** 1 day (7 hours)

📍 **LOCATION:** Bureau Veritas CODDE's office or your office (Intra-training)

✉️ **CONTACT:** codde@fr.bureauveritas.com



CODDE

ENVIRONMENTAL COMMUNICATION: EN 15804 AND DHUP FORMAT

HOW TO CONDUCT AN ENVIRONMENTAL PRODUCT DECLARATION (EPD) IN COMPLIANCE WITH THE REQUIREMENTS OF EN 15804 STANDARD, ITS NATIONAL COMPLEMENT AND THE DHUP DECREE FOR ALL BUILDING PRODUCTS?

OBJECTIVES:

- Being able to answer the demands from your customers: payer, call for tenders, etc
- Knowing the regulatory requirements of DHUP decree and orders on the environmental declarations of building products
- Being able to write a type III (ecoprofile) environmental declaration in both regulatory DHUP and normative EN 15804 format.

AUDIENCE:

Product managers, business managers, project managers, designers, quality and environment managers, marketing and communication managers

LEVEL: Intermediate

PRE-REQUISITE:

Environmental communication & Life-Cycle Assessment: principles and applications or equivalent knowledge/training



Intermediate Level



PROGRAM

Understanding the link between the environmental quality of buildings and environmental declarations

Regulatory and normative context for the environmental assessment of building products and equipment

Introduction to EN 15804 standard and its national complement

Introduction to the regulatory requirements of DHUP decree and orders on environmental declarations of material and decoration products to be integrated into buildings

Compliance agenda

Conducting your declaration in EN 15804 and national complement format

LCA of your product in compliance with the methodological requirements of EN 15804 standard

Content of the study report and the environmental declaration

Verification by empowered verifier: processing and deliverables

Registration to the regulatory database

Specific cases of declarations: rules to follow

Update of existing declarations

Focus on flow indicators (energy and waste) and modularity principle

Vademecum AIMCC

Each item of the training will be illustrated with practical exercises as well as role-playing allowing the trainees to improve their learning skills: Q&A, workshop, examples for your specific activity, practical cases in EIME (LCA software).

USEFUL INFORMATION

🕒 **DURATION:** 1 day (7 hours)

📍 **LOCATION:** Bureau Veritas CODDE's office or your office (Intra-training)

✉️ **CONTACT:** codde@fr.bureauveritas.com

ENVIRONMENTAL COMMUNICATION: EPD FORMAT

HOW TO CONDUCT AN ENVIRONMENTAL PRODUCT DECLARATION (EPD) IN EPD® SYSTEM FORMAT?

OBJECTIVES:

- Being able to answer the demands from your customers: payer, call for tenders, etc
- Knowing the requirements of EPD® System format
- Being able to write a type III (ecoprofile) environmental declaration in EPD® System format

AUDIENCE:

Product managers, business managers, project managers, designers, quality and environment managers of all sectors (food, textile, etc), all system integrators (including transport)

LEVEL: Intermediate

PRE-REQUISITE:

Environmental communication & Life-Cycle Assessment: principles and applications or equivalent knowledge/training



PROGRAM

Understanding the EPD® System program

Introduction to EPD® System program

Structure of EPD® System program

Structure of EPD System program's PCRs

Conducting your declaration in EPD® System format

LCA of your product in compliance with the methodological requirements of EN 15804 standard

Content of the study report

Content of the environmental declaration

Verification by empowered verifier: processing and deliverables

Registration of the declaration

Specific cases

Missing PCR

PCR development process and moderator role

Each item of the training will be illustrated with practical exercises as well as role-playing allowing the trainees to improve their knowledge: Q&A, workshop, reflexion on PCRs, verification process, etc.

USEFUL INFORMATION

🕒 **DURATION:** 1 day (7 hours)

📍 **LOCATION:** Bureau Veritas CODDE's office or your office (Intra-training)

✉ **CONTACT:** codde@fr.bureauveritas.com



CODDE

ENVIRONMENTAL COMMUNICATION: FRENCH AND EUROPEAN (PRODUCT ENVIRONMENTAL FOOTPRINT - PEF) INITIATIVES OF ENVIRONMENTAL LABELLING

HOW SHALL YOU FACE FRENCH AND EUROPEAN INITIATIVES OF ENVIRONMENTAL COMMUNICATION?

OBJECTIVES:

- Knowing the evolutions of French environmental labelling and ADEME tool
- Discovering the European project of environmental labelling (PEF/OEF) and pilot products
- Raising awareness on future methodological and regulatory implications

AUDIENCE:

Product managers, business managers, project managers, designers, quality and environment managers, manufacturer of all sectors

LEVEL: Intermediate

PRE-REQUISITE:

Environmental communication & Life-Cycle Assessment: principles and applications or equivalent knowledge/training



PROGRAM

European environmental labelling project

Context and objectives of the French environmental labelling initiative

PCR by category of products

Tools and databases for the ADEME environmental labelling

Main principles of the project

Objectives and stakes of the environmental labelling project

Stakeholders and pilot products

Methods and constraints

Agenda

logical and regulatory implications

Integration of environmental labelling into the regulatory and normative landscape

Harmonization of environmental labelling: stakes and difficulties

Each item of the training will be illustrated with practical exercises as well as role-playing allowing the trainees to improve their knowledge: Q&A, workshop, etc.

USEFUL INFORMATION

🕒 **DURATION:** 1 day (7 hours)

📍 **LOCATION:** Bureau Veritas CODDE's office or your office (Intra-training)

✉️ **CONTACT:** codde@fr.bureauveritas.com



CODDE

EIME DESIGNER

HOW TO CONDUCT THE LIFE-CYCLE ASSESSMENT (LCA) OF YOUR PRODUCT THANKS TO EIME SOFTWARE?

OBJECTIVES:

- Mastering the environmental assessment of your products according to the Life-Cycle Assessment methodology thanks to EIME v5 software
- Interpreting the results of your evaluation and identification of ecodesign axes of your product
- Exporting the results of the evaluation to apply them depending on the context
- Surfing in an autonomous way in EIME software

AUDIENCE:

New EIME v5 user, all sectors

LEVEL: Beginner

PRE-REQUISITE: None



PROGRAM

Introduction to Life-Cycle Assessment

Environmental stakes

Normative and regulatory context: identification of appropriate references depending on the context

LCA steps

Introduction to LCA applications: diagnosis, comparative choice, communication

Modelling the life-cycle of product

Creation of a case study

Modelling of the manufacturing phase: creation of an architecture, description of the database

Modelling of other life-cycle phases

Complementary modelling functions (use of templates, modelling rules and edition of containers)

Analysing the results

Check the consistency of modelling

Environmental indicators and aspect contribution to impacts

Interpretation of design indicators (recyclability, Bill of Materials)

By the end of this training, participants will be able to conduct the LCA of their products in EIME v5, to interpret it, to know the functionalities of the tool and to surf in full autonomy. A concrete example in your activity sector will be the connecting thread of this training (your specific product for an intra-training).

USEFUL INFORMATION

🕒 **DURATION:** 1,5 day (10,5 hours)

📍 **LOCATION:** Bureau Veritas CODDE's office or your office (Intra-training)

✉️ **CONTACT:** codde@fr.bureauveritas.com

**CODDE**

EIME DESIGNER: TO GO FURTHER

HOW TO DEEPEN YOUR PRACTICE OF EIME TOOL?
BUREAU VERITAS CODDE EXPERTS ANSWER YOU.

OBJECTIVES:

- Deepening your knowledge in EIME v5 tool and its functionalities
- Adapting your EIME practice to your LCA and ecodesign specificities
- Interpreting the results of your evaluation and identification of ecodesign axes of your product
- Answering all your technical specific requests

AUDIENCE:

Regular or occasional EIME v5 user, all sectors

LEVEL: Intermediate to Advanced

PRE-REQUISITE: EIME Designer & EIME license



PROGRAM

Optimize EIME modelling

Import function

Use of export functions (design, analysis, EIME, etc)

Case study management and identification of adapted data to your case studies in the database (phase 2)

Advanced modelling and analysis functions (missing items, shortcuts, comparison)

Deepening your LCA technics

BOM and reference flow

Modelling of a process specific to the company: integration of materials, loss rates, waste and energy flows

Modelling of upstream and downstream transport

Modelling of the end-of-life of a product

Interpretation of flow indicators' results (ecodesign tracking)

Answering your questions

Program upon demand

Practice exchange time with the trainer

Personalized practical exercises in EIME v5

Prior to the training, each participant is invited to transmit his/her question to the trainer who can adapt the content of the presentation.

After the meeting, the participants will be able to conduct LCA in EIME at an advanced level in compliance with the expectations and requirements from payers. They will also be able to identify improvement points in link with their use of the software.

USEFUL INFORMATION

🕒 **DURATION:** 1 day (7 hours)

📍 **LOCATION:** Bureau Veritas CODDE's office or your office (Intra-training)

✉️ **CONTACT:** codde@fr.bureauveritas.com

**CODDE**

EIME PROJECT & DATABASE MANAGER

How to manage the users, the database and the indicators of the Enterprise EIME license?

OBJECTIVES:

- Knowing how to use Project Manager functions in EIME regarding users, LCI data and indicators
- Knowing how to handle technical and management difficulties linked to the creation of new data and databases
- Knowing how to handle technical and management difficulties linked to the creation of new indicators and sets of indicators

AUDIENCE:

Project Manager EIME v5 user, all sectors

LEVEL: Advanced

PRE-REQUISITE: EIME Designer & EIME license



PROGRAM

Users management

Creation and management of projects

Management of the user pool

Database management

Methodological bases to LCI dataset creation and documentation

Development of "proprietary" LCI dataset

Management of LCI dataset and "proprietary" databases

Indicators management

Methodological bases to indicator creation and documentation

Creation of impact indicators in compliance with a characterization method

Management of indicators and "proprietary" sets of indicators

Answering your questions

Program upon demand

Practice exchange time with the trainer

Personalized practical exercises in EIME v5

Prior to the training, each participant is invited to transmit his/her question to the trainer who can adapt the content of the presentation.

After the meeting, the participants will be able to manage their Enterprise EIME license projects, as well as the creation of "proprietary" LCI datasets and indicators.

Practical case studies of project and database management will illustrate this training.

A complementary training is proposed in option for users willing to deepen their knowledge in the "ILCD Handbook" recommendations of the European Commission and the "Product Environmental Footprint - PEF" project.

USEFUL INFORMATION

🕒 **DURATION:** 1 day (7 hours) + 0.5 day for ILCD and PEF Fundamentals

📍 **LOCATION:** Bureau Veritas CODDE's office or your office (Intra-training)

✉ **CONTACT:** codde@fr.bureauveritas.com

**CODDE**

HAZARDOUS SUBSTANCES PLATFORM

HOW TO DECLARE AND TRACE HAZARDOUS SUBSTANCES WITHIN YOUR PRODUCTS?

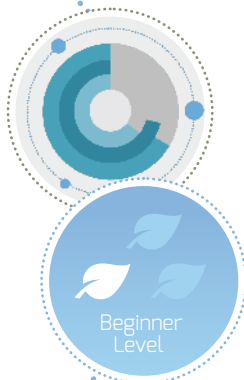
OBJECTIVES:

- Identifying the presence of hazardous substances within your products
- Collecting and storing supplier information in a harmonized way
- Following up in real time the process of collection of information
- Getting a material declaration format recognized at the international level by suppliers, authorities and clients
- Surfing in an autonomous way on the online platform

AUDIENCE: New user, E&E sector

LEVEL: Beginner

PRE-REQUISITE: None



PROGRAM

Introduction to hazardous substances stakes

Environmental stakes

Normative and regulatory context

Focus on IEC 62474 standard

Declaring hazardous substances

Creation of a case study: product, sub-assembly, material, substance

Using the list of hazardous substances available

Complementary modelling functions

Tracing hazardous substances

Collecting the suppliers' declarations and following their answers

Ensuring the traceability of information

Editing the final declaration in an internationally-recognized format

By the end of this training, participants will be able to declare and trace hazardous substances within their products, to interact with suppliers, to know the functionalities of the tool and to surf in full autonomy.

A concrete example in your activity sector will be the connecting thread of this training (your specific product for an intra-training).

USEFUL INFORMATION

🕒 **DURATION:** 1 day (7 hours)

📍 **LOCATION:** Bureau Veritas CODDE's office or your office (Intra-training)

✉ **CONTACT:** codde@fr.bureauveritas.com

Environmental performance and products

Name of the training	Duration	Level	Pre-requisite	Sector	Price (inter-training, excl. VAT)
Environment : A better understanding for a perfect management	1 d	Beginner	-	All sectors	650€
Life-Cycle Assessment (LCA): principles and applications	1 d	Beginner	-	All sectors	650€
Life-Cycle Assessment (LCA): E&E sector specificities	0.5 d	Intermediate	Life-Cycle Assessment (LCA): principles and applications or equivalent knowledge/training	E&E	350€
Life-Cycle Assessment (LCA): Textile sector specificities	0.5 d	Intermediate	Life-Cycle Assessment (LCA): principles and applications or equivalent knowledge/training	Textile	350€
Life-Cycle Assessment (LCA): Equipment and Building sector specificities	0.5 d	Intermediate	Life-Cycle Assessment (LCA): principles and applications or equivalent knowledge/training	Building	350€
Circular economy: innovation for sustain leadership	1d	Beginner	-	All sectors	650€
Life-Cycle Costing (LCC): principles and applications	1 d	Beginner	-	All sectors	650€
Water Footprint: principles and applications	1 d	Beginner	-	All sectors	650€
Social Life-Cycle Assessment (SLCA): principles and applications	1 d	Beginner	-	All sectors	650€
Ecodesign: principles and applications	1 d	Beginner	-	All sectors	650€
Ecodesign: planning and management	1 d	Intermediate	Ecodesign: principles and applications or equivalent knowledge/training	All sectors	700€
Ecodesign: preparing for certification	1 d	Advanced	Ecodesign: planning and management or equivalent knowledge/training	All sectors	850€
Ecodesign: ISO 14006 standard	1 d	Advanced	Ecodesign: planning and management or equivalent knowledge/training	All sectors	850€
Carbon: stakes, assessment and improvement	1.5 d	Beginner	-	All sectors	900€
Carbon: application to biofuels	1 d (OP) or 2 d (AUD)	Beginner	-	Agri-food	650€ (OP) or 1,200€ (AUD)

Communication

Name of the training	Duration	Level	Pre-requisite	Sector	Price (inter-training, excl. VAT)
Environmental communication: principles and applications	1 d	Beginner	-	All sectors	650€
Environmental communication : PEP ecopassport® format	1 d	Intermediate	Environmental communication: principles and applications or equivalent knowledge/training	E&E	700€
Environmental communication : XP C08-100-1 and DHUP format	1 d	Intermediate	Environmental communication: principles and applications or equivalent knowledge/training	Building equipment	700€
Environmental communication : EN 15804 and DHUP format	1 d	Intermediate	Environmental communication: principles and applications or equivalent knowledge/training	Building materials	700€
Environmental communication : EPD format	1 d	Intermediate	Environmental communication: principles and applications or equivalent knowledge/training	Textile, Transport, Agri-food, Others	700€
Environmental communication: French and European (Product Environmental Footprint - PEF) initiatives of environmental labelling	1 d	Intermediate	Environmental communication: principles and applications or equivalent knowledge/training	All sectors	700€

Ecodesign tools

Name of the training	Duration	Level	Pre-requisite	Sector	Price (inter-training, excl. VAT)
EIME Designer	1.5 d	Beginner	-	All sectors	1,500€ + 500€ by ad. person
EIME Designer: to go further	1 d	Intermediate to Advanced	EIME Designer	All sectors	1,000€
EIME Database - Project & Database Manager	1 d	Advanced	EIME Designer: to go further	All sectors	1,200€
Hazardous substances platform	1 d	Beginner	-	All sectors	650€

E-training

Name of the training	Duration	Level	Pre-requisite	Sector	Price (inter-training, excl. VAT)
EIME e-training: specific remote training	By 0.5 d	Beginner to Advanced	-	All sectors	On demand



CODDE

Registration form

In order to register to training, please send back this form (with signature and company stamp) with an **order** form from your company:

- By email: **codde@fr.bureauveritas.com**
- By mail: **Bureau Veritas CODDE 170 rue de Chatagnon ZI Centr'Alp 38430 Moirans France**

Company

Name:

Address:

Phone number: Fax number:

Company number: VAT identification number:

Administrative contact in the company:

Function/Service:

Email: Phone number:

List of Participants:

Surname, First name	Function/Service	E-mail	Phone number

By signing this form and by sending it back to Bureau Veritas CODDE, you acknowledge you understand and agree to the terms and conditions of sales, you agree to these conditions without any reserve and you renounce to your company's general terms and conditions.

I declare I have the authority to commit my company under these terms and conditions, which owe you the total amount of € excl. VAT, i.e. € incl. VAT, by (Means of payment).

In , The

Name, Function

Signature and company stamp